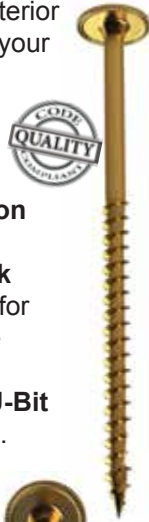


# CAP SCREW

The **Cap Screw™** is an ideal light duty interior and exterior screw. This screw makes all your small projects easier with the drawdown strength of the head and the clean finish.



## FEATURES:

- **Dome Head** with rim and **Cutting Ribbon** underhead.
- **Tapper Point** which consists of the **Cork Screw Start and Blade Cutting Thread** for easy piercing and alleviating strain on the material.
- **Tight Star Recess** system grasps the **U-Bit** tightly and can be installed with one hand.
- Same **U-Gold** coating as Universal and Construction screws.

Available in lengths 1-1/4" to 3-1/8" and 8x1-1/4" available **306 Grade Stainless Steel**. Cap underhead



# TOPSTAR SCREW

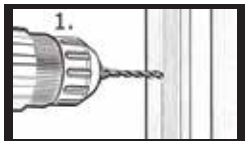
The adjustable screw replaces shimming and can make door hanging a one person job.



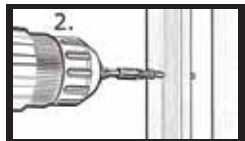
The **TopStar™** is designed to replace shims when levelling doors, windows and cabinets.

Use the **Crown Bit** to install and only the bit to re-adjust to level.

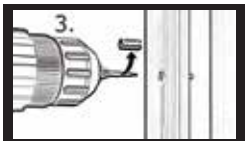
Available in lengths 2-1/2", 3-1/8" and 4".



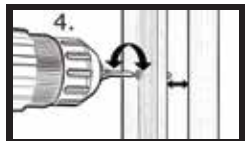
1. Predrill frame/jamb with 5/16" drill bit.



2. Engage crown bit into TopStar screw head and drive flush to surface of frame or jamb.



3. For adjustments remove crown from bit.



4. Engage bit into center hole of TopStar screw head and adjust to your requirements.

# U-BITS

The **U-Bits™** are specifically designed to fit snug and firm on the **Tight Star Recess** of the U2 fasteners™ screw assortment. However, U2 fasteners™ also fit the traditional star drive. **U-Bits™** are impact driver ready and are made of hardened steel to prevent wear and tear.

Range in sizes of 1" to 3" in T-10, T-15, T-20, T-25, T-30 and T-40. Offered packaged in cards of two bits per card or in packs of 25pcs

## \* Tight Star Recess

This patented driving system is designed to grasp the **U-BIT** tightly and the fastener can be installed with one hand.



## \* Reamer Thread

Enlarges the hole in the material to create a better passage when drawing material together to reduce tension on the screw.



## \* Talon Grip

Underneath the screw head of the **CS Screw** the **Talon Grip** holds the screw tight to prevent loosening and uses its nibs to dig into the material when countersunk.



## \* Tapper Point

The **Tapper Point** consists of the **Cork Screw Start** and **Blade Cutting Thread** for easy piercing and alleviating strain on the material.



## \* Burrow Pockets

The **Burrow Pockets** underneath the head of the **Universal Screw** burrow and alleviate pressure when countersinking the head.



**BUILDING CODE COMPLIANT = QUALITY FROM THE START**  
**CR 6+ FREE COATING = HEALTH & SAFETY**  
**TIGHT RECESS = EFFICIENCY**  
**TAPPER POINT = TIME SAVER**

**REAMER THREAD = BATTERY LIFE & PHYSICAL ENERGY SAVER**

**EFFICIENCY + PRODUCTIVITY = MONEY SAVED**



08/2018



**U2 fasteners™**  
 sales@u2fasteners.com  
 www.u2fasteners.com  
 tf: 855-895-7096  
 fx: 807-623-6224



**U2 fasteners™**  
**The GAME CHANGER**  
**in the fastener industry**

*Fasteners*  
**Engineers and Contractors agree on**  
**for your next project.**

## UNIVERSAL SCREW

**U2 FASTENERS™ Universal Screw™** is ideal for replacing those old deck screws. The features of the Universal Screw™ work together to drive and secure this screw in many types of materials that are used in residential construction.

### FEATURES:

- **Structural & ACQ treated lumber compliant. See report ER-454.**
- **U-Gold** coating.
- **Tapper Point**, consisting of the **Cork Screw Start and Blade Cutting Thread** for easy piercing and alleviating strain on the material.
- **Tight Star Recess** system grasps the **U-Bit** tightly and can be installed with one hand.
- Underneath the Universal head **Burrow Pockets** are dynamically engineered to help countersink into the toughest of materials.
- Below the smooth shank is the **Reamer Thread**, which enlarges the hole to create a passage when drawing materials together and reduces tension for the screw head.



Available in lengths from 1-1/2" up to 12" in hardened steel and from 1-1/2" to 4" in 316 Marine Grade Stainless Steel.

## CONSTRUCTION SCREW



The **U2 Construction Screw™**, also known as **CS Screw**, is the next generation of construction screws that are replacing lag screws.

### FEATURES:

- **Structural & ACQ treated lumber compliant. See report ER-454.**
- **U-Gold** coating.
- **Dome Head** enhances the structural capability.
- **Tapper Point** which consists of the **Cork Screw Start and Blade Cutting Thread** for easy piercing and alleviating strain on the material.
- **Tight Star Recess** system grasps the **U-Bit** tightly and can be installed with one hand.
- **Talon Grip** holds the screw tight to prevent loosening and uses its nibs to dig into the material when countersunk.
- **Reamer Thread** enlarges the hole in the material to create a larger passage when drawing materials together and reduces tension on the screw head.



Available in lengths from 2-1/2" up to 16" in hardened steel, and in lengths from 2-1/2" to 6" made of 316 Marine Grade Stainless Steel.

## FINE SCREW



The **Fine Screw™** is designed especially for carpenters who do fine professional work. When building the most delicate of projects, contractors prefer U2 Fasteners™ Fine Screw™ for its modest head size. Also available in **WHITE**.

### FEATURES:

- With its slim shank and bulging thread this screw can be used without damaging even the hardest wood.
- **Tapper Point** which consists of the **Cork Screw Start and Blade Cutting Thread** for easy piercing and alleviating strain on the material.
- **Tight Star Recess** system grasps the **U-Bit** tightly and can be installed with one hand.
- Same **U-Gold** coating as Universal and CS screws.

Fine underhead



Available in lengths of 1-1/2" to 5" in case hardened steel, **WHITE** and in lengths of 1-1/2" to 3" made of 316 Marine Grade Stainless Steel.

## RE-FINE SCREW



The **Re-Fine Screw™** is the brother to the Fine Screw™ but has the **RE-FINE Thread** that depresses synthetic materials for a clean finished appearance. Also available in **WHITE**.

### FEATURES:

- With its slim shank and bulging thread this screw can be used without damaging even the hardest wood.
- **Tapper Point** which consists of the **Cork Screw Start and Blade Cutting Thread** for easy piercing and alleviating strain on the material.
- **Tight Star Recess** system grasps the **U-Bit** tightly and can be installed with one hand.
- **RE-FINE Thread** depresses synthetic surface materials for a clean finished appearance.

Available in lengths of 2" to 3-1/8" in case hardened steel and in **WHITE** case hardened steel.