



# THE DRIVING FORCE IN THE FASTENER INDUSTRY.



U2 fasteners™ is the GAME CHANGER in the fasteners industry. Fasteners that engineers and contractors agree on for your next project.

With 8 product lines, we have a diverse lineup of all essential screw types for construction or any other

855-895-7096  
u2fasteners.com  
[info@u2fasteners.com](mailto:info@u2fasteners.com)





# GAME CHANGER FACTS

BUILDING CODE COMPLIANT = QUALITY FROM THE START

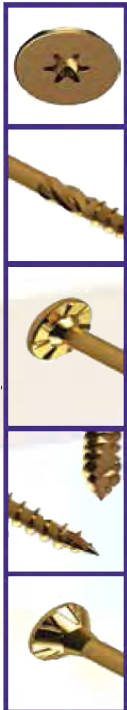
CR 6+ FREE COATING = HEALTH & SAFETY

TIGHT RECESS = EFFICIENCY

TAPPER POINT = TIME SAVER

REAMER THREAD = BATTERY LIFE & PHYSICAL ENERGY SAVER

EFFICIENCY + PRODUCTIVITY = MONEY SAVED \$\$\$\$



## \* **Tight Star Recess**

This patented driving system is designed to grasp the **U-BIT** tightly and the fastener can be installed with one hand.

## \* **Reamer Thread**

Enlarges the hole in the material to create a better passage when drawing material together to reduce tensions on the screw.

## \* **Talon Grip**

Underneath the screw head of the **CS Screw** the **Talon Grip** holds the screw tight to prevent loosening and uses its nibs to dig into the material when countersunk.

## \* **Tapper Point**

The **Tapper Point** consists of the **Cork Screw Start** and **Blade Cutting Thread** for easy piercing and alleviating strain on the material.

## \* **Burrow Pockets**

The **Burrow Pockets** are underneath the head of the **Universal Screw** and



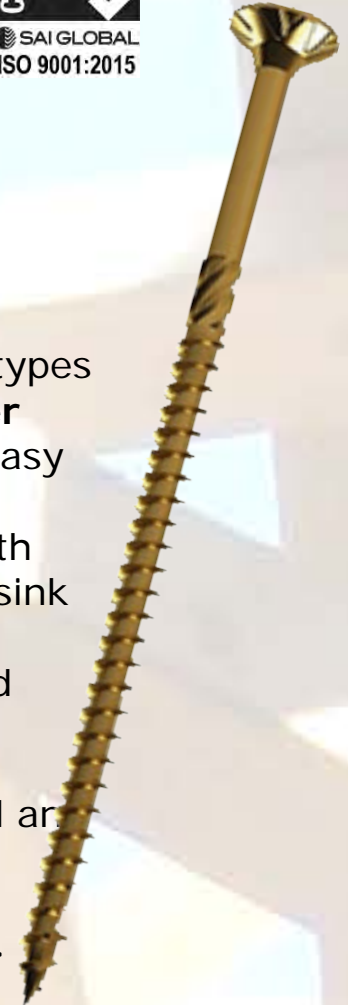


# UNIVERSAL SCREW

U2 fasteners™ Universal screw is ideal for replacing those old deck screws and is **Structural & ACQ treated lumber compliant in IAPMO report ER-454**. The Universal screw's features work together to drive and secure this screw in many types of materials that are used in residential construction. Features include the **Tapper Point**, which consists of the **Cork Screw Start** and **Blade Cutting Thread** for easy piercing and alleviating strain on the material. The **Tight Star Recess** system is designed to grasp the U-Bit tightly and can be installed with one hand. Underneath the Universal head **Burrow Pockets** are dynamically engineered to help countersink into the toughest of materials. Below the smooth shank is the **Reamer Thread**, which enlarges the hole to create a passage when drawing materials together and reduces tension for the screw head.

The U2 Universal Screw is available in lengths from 1/2" to 12" in hardened steel and from 1- 1/4" to 4" in 316 Grade Stainless Steel.

**#6, #8 screws take a T-15 U-Bit. #9, #10, #12 screws take a T-25 U-Bit.**





# UNIVERSAL SCREW

SCREW	BULK		BUCKET		PACKAGE	
SIZE	STOCK CODE	PCS	STOCK CODE	PCS	STOCK CODE	PCS
6 X 1-1/2"	U06100500B	16,000	U06100500P	1,600	U06100500H	100
6 X 5/8"	U06100625B	14,000	U06100625P	1,400	U06100625H	100
6 X 1-1/2"	U06101500B	8,000	U06101500P	928	U06101500H	100
8 X 1-1/4"	U08101250B	10,000	U08101250P	835	U08101250H	100
8 X 1-1/2"	U08101500B	6,500	U08101500P	750	U08101500H	100
8 X 2"	U08102000B	4,500	U08102000P	630	U08102000H	100
9 X 1-1/2"	U09101500B	5,200	U09101500P	610	U09101500H	100
9 X 1-3/4"	U09101750B	4,500	U09101750P	542	U09101750H	100
9 X 2"	U09102000B	3,700	U09102000P	510	U09102000H	100
9 X 2-1/2"	U09102500B	2,600	U09102500P	435	U09102500H	100
9 X 2-3/4"	U09102750B	2,000	U09102750P	365	U09102750H	100
9 X 3-1/8"	U09103125B	1,500	U09103125P	330	U09103125H	100
10 X 1-5/8"	U10101625B	2,500	U10101625P	500	U10101625H	100
10 X 2-1/4"	U10102250B	2,500	U10102250P	500	U10102250H	100
10 X 2-1/2"	U10102500B	2,200	U10102500P	350	U10102500H	100
10 X 2-3/4"	U10102750B	2,000	U10102750P	295	U10102750H	100
10 X 3-1/8"	U10103125B	1,500	U10103125P	270	U10103125H	100
10 X 3-1/2"	U10103500B	1,200	U10103500P	225	U10103500H	50
10 X 4"	U10104000B	1,000	U10104000P	200	U10104000H	50
10 X 4-1/2"	U10104500B	800	U10104500P	170	U10104500H	50
12 X 3-1/2"	U12103500B	1,200	U12103500P	125	U12103500H	50
12 X 4"	U12104000B	800			U12104000H	50
12 X 5"	U12105000B	500			U12105000H	50
12 X 6"	U12106000B	500			U12106000H	50
12 X 7"	U12107000B	300			U12107000H	40
12 X 8"	U12108000B	300			U12108000H	40
12 X 10"	U12110000B	300			U12110000H	40
12 X 12"	U12112000B	300			U12112000H	40
<b>UNIVERSAL SCREW (STAINLESS 316)</b>						
8 X 1-1/4"	H08101250B	10,000	H08101250P	680	H08101250H	100
8 X 1-1/2"	H08101500B	6,500	H08101500P	620	H08101500H	100
8 X 1-3/4"	H08101750B	5,000	H08101750P	548	H08101750H	100
9 X 1-1/2"	H09101500B	5,000	H09101500P	545	H09101500H	100
9 X 2"	H09102000B	3,700	H09102000P	460	H09102000H	100
10 X 2-1/2"	H10102500B	2,200	H10102500P	295	H10102500H	100
10 X 2-3/4"	H10102750B	2,000	H10102750P	250	H10102750H	100
10 X 3"	H10103000B	1,500	H10103000P	210	H10103000H	100
10 X 4"	H10104000B	1,000	H10104000P	165	H10104000H	50



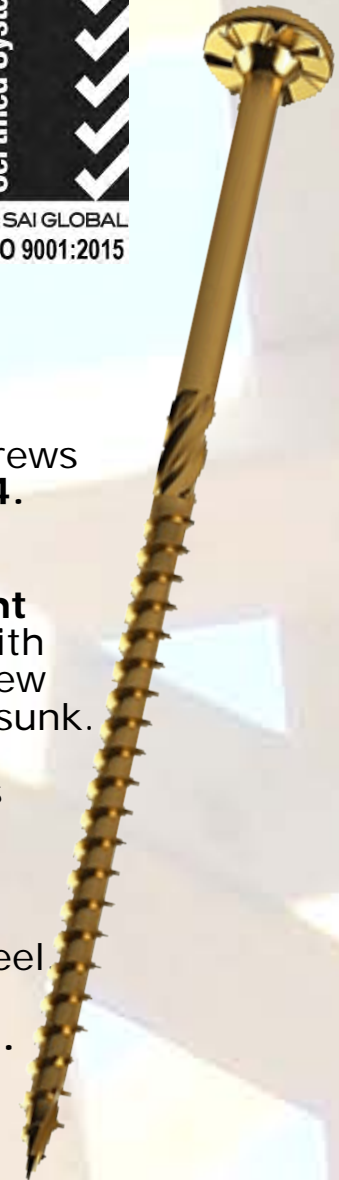


# CONSTRUCTION SCREW

The U2 CS is the next generation of construction screws that are replacing lag screws and is **Structural & ACQ treated lumber compliant in IAPMO report ER-454**. The **Dome Head** enhances the structural capability. The U2 CS has the essential features: the **Tapper Point** which consists of the **Cork Screw Start** and **Blade Cutting Thread** for easy piercing and alleviating strain on the material. The **Tight Star Recess** system is designed to grasp the U-Bit tightly and can be installed with one hand. Underneath the screw head of the U2 CS the **Talon Grip** holds the screw tight to prevent loosening and uses its nibs to dig into the material when countersunk. Below the smooth shank is the **Reamer Thread**, which enlarges the hole in the material to create a larger passage when drawing materials together and reduces tension on the screw head.

The U2 Construction Screw is available in lengths from 1-1/2" to 20" made of hardened steel, and in lengths from 1-1/2" to 8" made of 316 Grade Stainless Steel.

**#10 and #1/4 screws take a T-25 U-Bit. #5/16 screws take a T-30 U-Bit. #3/8 screw takes a T-40 U-Bit.**





# CONSTRUCTION SCREW



SCREW SIZE	BULK STOCK CODE	PCS		BUCKET STOCK CODE	PCS		PACKAGE STOCK CODE	PCS	
10 X 1-1/2"	S10101500B	2,300		S10101500P	282		S10101500H	40	
10 X 2"	S10102000B	1,600		S10102000P	258		S10102000H	40	
10 X 2-1/2"	S10102500B	1,000		S10102500P	240		S10102500H	40	
10 X 2-3/4"	S10102750B	1,000		S10102750P	207		S10102750H	40	
10 X 3-1/8"	S10103125B	800		S10103125P	180		S10103125H	40	
1/4 X 1-1/2"	S14101500B	1,000		S14101500P	225		S14101500H	40	
1/4 X 2"	S14102000B	800		S14102000P	179		S14102000H	40	
1/4 X 2-1/2"	S14102500B	700		S14102500P	166		S14102500H	40	
1/4 X 2-3/4"	S14102750B	700		S14102750P	144		S14102750H	40	
1/4 X 3-1/8"	S14103125B	700		S14103125P	131		S14103125H	40	
1/4 X 3-3/8"	S14103375B	400		S14103375P	107		S14103375H	40	
5/16 X 2-1/2"	S20102500B	600					S20102500H	40	
5/16 X 3-1/8"	S20103125B	500					S20103125H	40	
5/16 X 4"	S20104000B	400					S20104000H	40	
5/16 X 5"	S20105000B	300					S20105000H	40	
5/16 X 6"	S20106000B	300					S20106000H	40	
3/8 X 3-1/8"	S22103125B	300					S22103125H	40	
3/8 X 3-3/8"	S22103375B	300					S22103375H	40	
3/8 X 4"	S22104000B	300					S22104000H	40	
3/8 X 5"	S22105000B	300					S22105000H	40	
3/8 X 6"	S22106000B	300					S22106000H	40	
3/8 X 6-3/4"	S22106750B	300					S22106750H	40	
3/8 X 7"	S22107000B	300					S22107000H	40	
3/8 X 8"	S22108000B	300					S22108000H	40	
3/8 X 10"	S22110000B	300					S22110000H	40	
3/8 X 12"	S22112000B	300					S22112000H	40	
3/8 X 14"	S22114000B	300					S22114000H	40	
3/8 X 16"	S22116000B	80					S22116000H	40	
3/8 X 20"	S22120000B	100					S22120000H	25	
<b>CONSTRUCTION SCREW (STAINLESS 316)</b>									
10 X 1-1/2"	I10101500B	2,300		I10101500P	372		I10101500H	40	
1/4 X 2"	I14102000B	800		I14102000P	220		I14102000H	40	
5/16 X 2-1/2"	I20102500B	600					I20102500H	40	
5/16 X 3"	I20103000B	500					I20103000H	40	
5/16 X 4"	I20104000B	400					I20104000H	40	
5/16 X 5"	I20105000B	300					I20105000H	40	
5/16 X 6"	I20106000B	300					I20106000H	40	
3/8 X 8"	I22108000B	300					I22108000H	40	





# FINE SCREW



The Fine screw is designed especially for carpenters who do fine professional work. With its slim shank and bulging thread this screw can be used without damaging even the hardest wood. When building the most delicate of projects, contractors prefer U2 fasteners™ Fine screw for its modest head size.

The U2 Fine screw is available in lengths of 1-1/4" to 5" in hardened steel and in lengths of 1- 1/2" to 2-1/2" made of 316 Grade Stainless Steel.

**#8 screws take a T-10 U-Bit. #9 screws take a T-15 U-Bit.**

SCREW	BULK			BUCKET			PACKAGE		
SIZE	STOCK CODE	PCS		STOCK CODE	PCS		STOCK CODE	PCS	
8 X 1-1/4"	F08101250B	10,000		F08101250P	775		F08101250H	100	
8 X 1-1/2"	F08101500B	6,500		F08101500P	700		F08101500H	100	
8 X 2"	F08102000B	4,500		F08102000P	565		F08102000H	100	
8 X 2-1/2"	F08102500B	3,500		F08102500P	475		F08102500H	100	
8 X 2-3/4"	F08102750B	3,000		F08102750P	400		F08102750H	100	
8 X 3-1/8"	F08103125B	2,000		F08103125P	400		F08103125H	100	
9 X 3-1/8"	F09103125B	2,000		F09103125P	315		F09103125H	100	
9 X 4"	F09104000B	1,000					F09104000H	50	
9 X 5"	F09105000B	800					F09105000H	50	
<b>WHITE FINE SCREW</b>									
8 X 2"	E08102000B	4,500		E08102000P	495		E08102000H	100	
8 X 2-1/2"	E08102500B	3,500		E08102500P	390		E08102500H	100	
8 X 2-3/4"	E08102750B	3,000		E08102750P	350		E08102750H	100	
8 X 3-1/8"	E08103125B	2,000		E08103125P	290		E08103125H	100	
<b>FINE SCREW (STAINLESS 316)</b>									
8 X 1-1/2"	K08101500B	6,500		K08101500P	670		K08101500H	100	
8 X 2"	K08102000B	4,500		K08102000P	565		K08102000H	100	
8 X 2-1/2"	K08102500B	3,500		K08102500P	435		K08102500H	100	
8 X 3"	K08103000B	2,000		K08103000P	310		K08103000H	100	
9 X 3"	K09103000B	2,000		K09103000P	275		K09103000H	100	







# RE-FINE SCREW

The Re-Fine screw is designed especially for carpenters who do fine professional work. With its slim shank and bulging thread this screw can be used without damaging even the hardest wood. When building the most delicate of projects, contractors prefer U2 fasteners™ Re-Fine screw for its modest head size and Re-Fine thread, depressing fibrous surface materials for a clean finished appearance.

The U2 Re-Fine screw is available in lengths of 2" to 3-1/8" in case hardened steel.

**#8 screws take a T-10 U-Bit. #9 screws take a T-15 U-Bit.**

SCREW	BULK			BUCKET			PACKAGE		
SIZE	STOCK CODE	PCS		STOCK CODE	PCS		STOCK CODE	PCS	
8 X 2"	R08102000B	4,500		R08102000P	565		R08102000H	100	
8 X 2-1/2"	R08102500B	3,500		R08102500P	475		R08102500H	100	
8 X 3-1/8"	R08103125B	2,000		R08103125P	400		R08103125H	100	
9 X 3-1/8"	R09103125B	2,000		R09103125P	315		R09103125H	100	
<b>WHITE RE-FINE SCREW</b>									
8 X 2"	Q08102000B	4,500		Q08102000P	495		Q08102000H	100	
8 X 2-1/2"	Q08102500B	3,500		Q08102500P	390		Q08102500H	100	
8 X 2-3/4"	Q08102750B	3,000		Q08102750P	350		Q08102750H	100	
8 X 3-1/8"	Q08103125B	2,000		Q08103125P	290		Q08103125H	100	
<b>RE-FINE SCREW (STAINLESS 316)</b>									
8 X 2-1/2"	N08102500B	3,500		N08102500P	386		N08102500H	100	
8 X 3"	N08103000B	2,000		N08103000P	300		N08103000H	100	







# CAP SCREW

The Cap screw is an ideal light duty interior and exterior screw. This screw makes all your small projects easier with the drawdown strength of the head and the clean finish.

The Cap screw is available in lengths 1-1/4" to 3-1/8".

**#8 screws take a T-15 U-Bit.**  
**#10 screws take a T-25 U-Bit.**

SCREW	BULK			BUCKET			PACKAGE		
SIZE	STOCK CODE	PCS		STOCK CODE	PCS		STOCK CODE	PCS	
8 X 1-1/4"	C08101250B	4,000		C08101250P	800		C08101250H	100	
8 X 1-1/2"	C08101500B	3,000		C08101500P	650		C08101500H	100	
8 X 1-3/4"	C08101750B	2,000		C08101750P	505		C08101750H	100	
8 X 2"	C08102000B	2,000		C08102000P	480		C08102000H	100	
8 X 2-1/2"	C08102500B	1,500		C08102500P	435		C08102500H	100	
8 X 2-3/4"	C08102750B	1,200		C08102750P	385		C08102750H	100	
8 X 3-1/8"	C08103125B	1,000		C08103125P	335		C08103125H	100	
<b>CAP SCREW (STAINLESS 305)</b>									
8 X 1-1/4"	J08101250B	4,000		J08101250P	635		J08101250H	100	
8 X 1-1/2"	J08101500B	3,000		J08101500P	425		J08101500H	100	
10 X 2-1/2"	J10102500B	1,000		J10102500P	168		J10102500H	40	





# STEEL SIDING SCREW



The Steel Siding screw is an ideal metal roofing, siding, garage door seal, trim and flashing screw, with a low profile white powder coated head and EPDM washer.

The Steel Siding screw is available in a 1-1/2" length.

SCREW	BULK			BUCKET			PACKAGE		
SIZE	STOCK CODE	PCS		STOCK CODE	PCS		STOCK CODE	PCS	
10 X 1-1/2"	M10101500B	2,300		M10101500P	320		M10101500H	50	





# VINYL EXTRUSION SCREW

The Vinyl Extrusion screw is an adjustable screw ideal for vinyl window retro-fits over old aluminum window frames. It has a small low profile white powder coated head and tek drill point.

The Vinyl Extrusion screw is available in a 3-1/8" length.

**These #10 screws take a standard T-25 Bit.**



SCREW				BUCKET				PACKAGE	
SIZE	STOCK CODE	PCS		STOCK CODE	PCS			STOCK CODE	PCS
10 X 3-1/8"	V10103125B	800		V10103125P	200			V10103125H	50

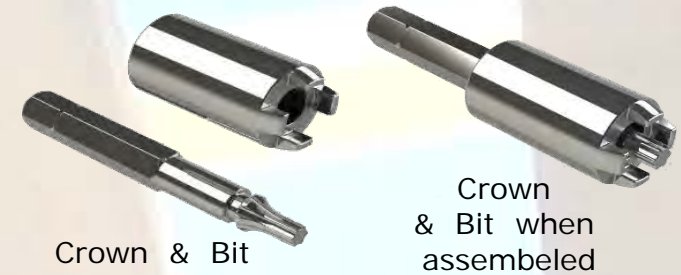


# U<sup>2</sup> FASTENERS™

THE ORIGINAL

# TOPSTAR™ SCREW

FASTENING SYSTEM



SCREW	BULK		BUCKET		PACKAGE	
SIZE	STOCK CODE	PCS	STOCK CODE	PCS	STOCK CODE	PCS
1/4 - 3/8 X 2-1/2"	T00102500B	500	T00102500T	100	T00102500H	18
1/4 - 3/8 X 3-1/8"	T00103125B	500	T00103125T	100	T00103125H	18
1/4 - 3/8 X 4"	T00104000B	500	T00104000T	100	T00104000H	18
CROWN BIT					B00250000Z	1



The adjustable screw replaces shimming and can make door hanging a one person job.

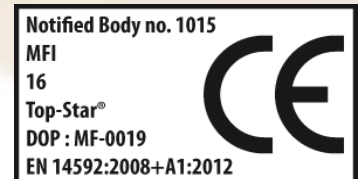
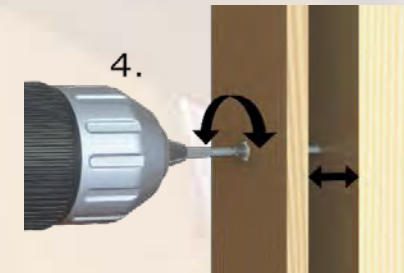
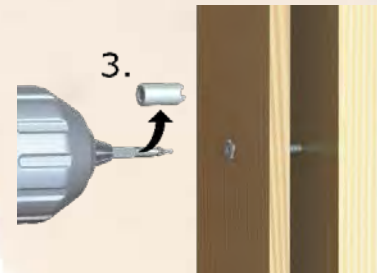
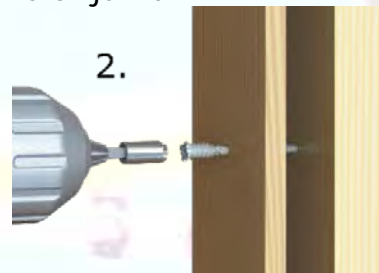
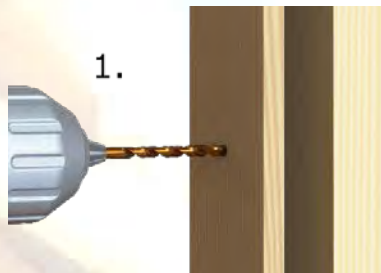
### Easy 4 Step Wood to Wood Installation

1. Predrill window frame/ door jamb (only) with 5/16" drill

2. Engage crown bit into TopStar™ screw head and drive flush to surface of frame or jamb.

3. For adjustments remove crown from bit.

4. Engage bit into center hole of TopStar™ screw head and adjust to your requirements.







# U-BITS



The U-Bits are specifically designed to fit snug and firm on the **Tight Star Recess** of the U2 fasteners™ screw assortment. However, U2 fasteners also fit the traditional star drive. U-Bits are impact driver ready and are made of the same case hardened steel as the fasteners

BIT	PACKAGE			CARDED		
SIZE	STOCK CODE	PCS		STOCK CODE	PCS	
10-1"	B00210010W	25		B00210010X	2	
10-2"	B00210020W	25		B00210020X	2	
10-3"	B00210030W	25		B00210030X	2	
10-6"				B00210060X	2	
15-1"	B00215010W	25		B00215010X	2	
15-2"	B00215020W	25		B00215020X	2	
15-3"	B00215030W	25		B00215030X	2	
15-6"				B00215060X	2	
20-1"	B00220010W	25		B00220010X	2	
20-2"	B00220020W	25		B00220020X	2	
25-1"	B00225010W	25		B00225010X	2	
25-2"	B00225020W	25		B00225020X	2	
25-3"	B00225030W	25		B00225030X	2	
25-6"				B00225060X	2	
30-1"	B00230010W	25		B00230010X	2	
30-2"	B00230020W	25		B00230020X	2	
30-3"	B00230030W	25		B00230030X	2	
30-6"				B00230060X	2	
40-1"	B00240010W	25		B00240010X	2	
40-2"	B00240020W	25		B00240020X	2	
40-3"	B00240030W	25		B00240030X	2	
BIT HOLDER	Z00302000W	1				

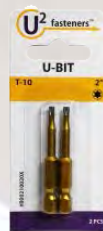


#####





# DISPLAY AND PACKAGING



Carded Bit



Bulk Box  
Carbon Steel Screws



Bulk Box  
Stainless Steel Screws



Header Card

Store Display 26"W x 22"D x 62"H



Bucket



Package

