



THE ORIGINAL

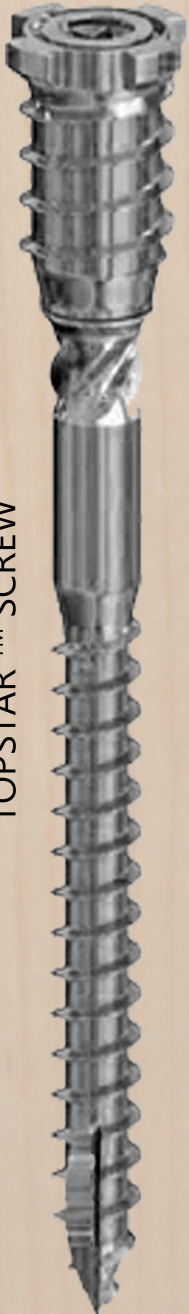
TOPSTAR™ SCREW

FASTENING SYSTEM

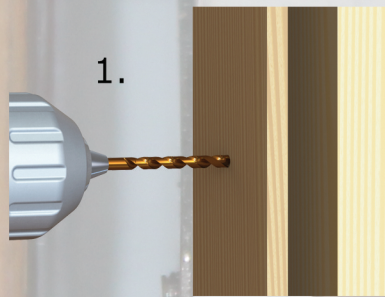
The patented adjustable screw replaces shimming and can make door hanging a one person job.

Ideal for anything where you need precise adjustments.
Windows, Ceilings, Doors, Floors and Cabinets

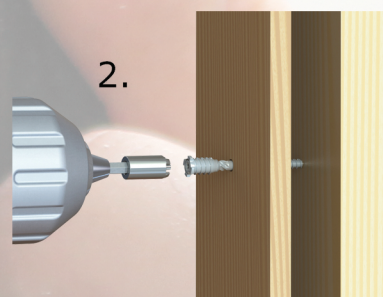
TOPSTAR™ SCREW



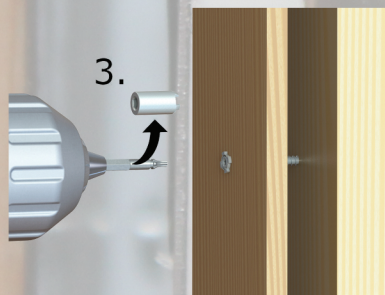
Easy 4 Step Wood to Wood Installation



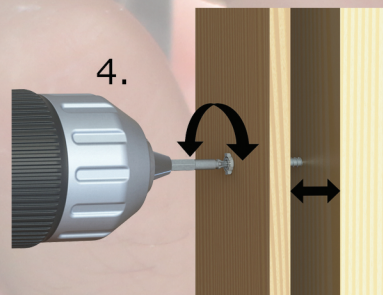
1. Predrill window frame/ door jamb (only) with 5/16" drill bit.



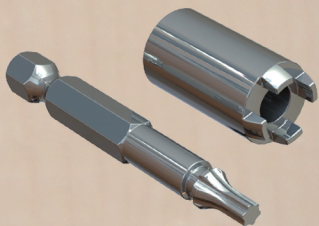
2. Engage crown bit into TopStar™ screw head and drive flush to surface of frame or jamb.



3. For adjustments remove crown from bit.



4. Engage bit into center hole of TopStar™ screw head and adjust to your requirements.



Crown Bit



Available in 2-1/2", 3-1/8" and 4" length.
(For other lengths please call)

855-895-7096

u2fasteners.com

info@u2fasteners.com