

TOPSTAR SCREW™



LEARN MORE
ABOUT THIS
PRODUCT

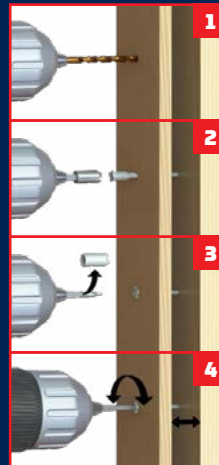


The original Topstar Fastening System™ replaces shimming and can make door hanging a one-person job. TOPSTAR™ is a dual, self-tapping screw which works as one and is perfect for door jambs/wooden windows, insulations, paneling and cabinets. Great for fine adjustments in both directions.

KEY FEATURES & UNIQUE TECHNOLOGIES

- ▶ Adjustable screw, with two moving parts in one. An inner screw and a sleeve as a screw head.
- ▶ The sleeve is free spinning on top of the screw core.
- ▶ The screw can only be installed with a special tool called Crown Bit, which locks both parts together.

EASY 4 STEP WOOD TO WOOD INSTALLATION



1 Predrill frame/jamb with $\frac{5}{16}$ " drill bit.

2 Engage crown bit into TopStar screw head and drive flush to surface of frame or jamb.

3 For adjustments remove crown from bit.

4 Engage bit into center hole of TopStar screw head and adjust to your requirements.

AVAILABLE SIZES

Available in lengths of 2- $\frac{1}{2}$ ", 3- $\frac{1}{8}$ " and 4".

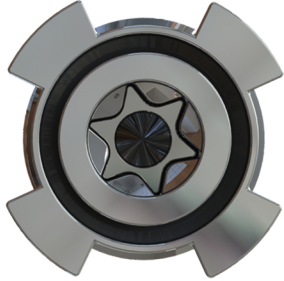
Connect with us:

Instagram Facebook YouTube @U2Fasteners

855-895-7096

u2fasteners.com





TOPSTAR™ ADJUSTABLE SCREW

The Sleeve

- Free Spinning Sleeve
On Top Of The Screw Core

Reamer Thread

- Enlarges The Hole Created By The Screw
For Easier Transition To The Upper Sleeve

Blade Cutting Thread

- Cuts A Smooth Path Into
Natural Or Synthetic Materials
- Provides The Connection With
A High Withdrawal Resistance

Type 17 Cut

- Sharp Point Groove
To Capture Chips

CROWN BIT™

Two-Piece Crown Bit

- Engages Both The Sleeve Section That Surrounds
The Screw Head And The Screw Core Simultaneously,
Turning Both Until The Sleeve Sits Flush
- By Removing The Outer Crown Portion Of The Bit,
You Can Then Turn The Main Star-Drive
To Adjust Plumb Or Level



Fasteners™

THE ORIGINAL

TOPSTAR™ SCREW

FASTENING SYSTEM

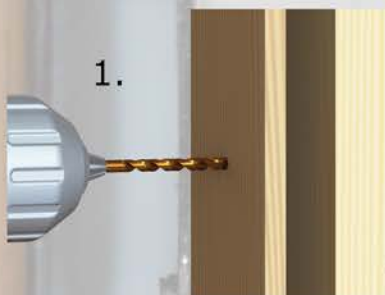


The patented adjustable screw replaces shimming and can make door hanging a one person job.

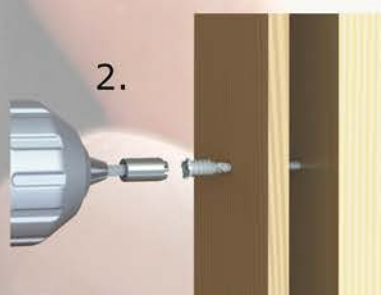
Ideal for anything where you need precise adjustments.
Windows, Ceilings, Doors, Floors and Cabinets

Easy 4 Step Wood to Wood Installation

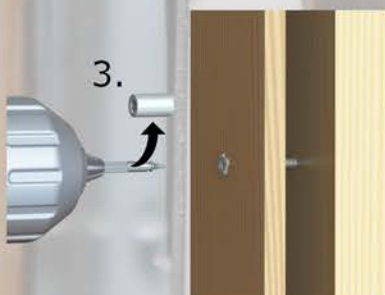
TOPSTAR™ SCREW



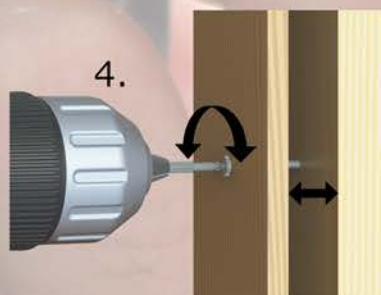
1. Predrill window frame/ door jamb (only) with 5/16" drill bit.



2. Engage crown bit into TopStar™ screw head and drive flush to surface of frame or jamb.



3. For adjustments remove crown from bit.



4. Engage bit into center hole of TopStar™ screw head and adjust to your requirements.



Crown Bit



Available in 2-1/2", 3-1/8" and 4" length.
(For other lengths please call)

855-895-7096

u2fasteners.com

info@u2fasteners.com