

TOPSTAR SCREW™

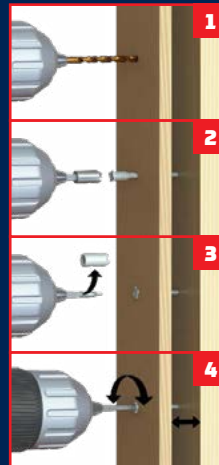


The original Topstar Fastening System™ replaces shimming and can make door hanging a one-person job. TOPSTAR™ is a dual, self-tapping screw which works as one and is perfect for door jambs/wooden windows, insulations, paneling and cabinets. Great for fine adjustments in both directions.

KEY FEATURES & UNIQUE TECHNOLOGIES

- ▶ Adjustable screw, with two moving parts in one. An inner screw and a sleeve as a screw head.
- ▶ The sleeve is free spinning on top of the screw core.
- ▶ The screw can only be installed with a special tool called Crown Bit, which locks both parts together.

EASY 4 STEP WOOD TO WOOD INSTALLATION



1 Predrill frame/jamb with $\frac{5}{16}$ " drill bit.

2 Engage crown bit into TopStar screw head and drive flush to surface of frame or jamb.

3 For adjustments remove crown from bit.

4 Engage bit into center hole of TopStar screw head and adjust to your requirements.

AVAILABLE SIZES

Available in lengths of 2- $\frac{1}{2}$ ", 3- $\frac{1}{8}$ " and 4".

LEARN MORE
ABOUT THIS
PRODUCT



Connect with us:

Instagram Facebook YouTube @U2Fasteners

855-895-7096

u2fasteners.com

